

Medical Aesthetics | Equipment

IPL SHR Elight 3 In 1

- ▶ Real manufacturer covering an area of more than 2200m² Best ODM & OEM services
- ▶ English-speaking after service team , 24 hours online service
- ▶ Sufficient inventory, the machines can be delivered within 5 working days



Technical Specifications

IPL SHR Elight 3 In 1

Light Source	Intense Pulsed Light
Wave Length	HR690~1200nm,SR560~1200nm
Light guide	Crystal light guide
Control Mode	Touch Control
Safety Classification	Class I, Type B
Spot size	16×50mm (HR),8×34mm(SR)
Spot Temperature	0-5 Degrees Celsius
Energy density	IPL mode 10~60J/cm ² ,SHR mode 1~15J/cm ²
E-light	1Mhz ,1~50W
Frequency	1~10Hz
Cooling system	Semiconductor Refrigeration +Water Cooling +Wind Cooling
Size	length Width Height 470×360×1040mm
Weight (net weight)	45kg
Fuse Specification	Ø5×25 15A
Input Power	3000W
Power requirement	AC220V±10% 15A 50HZ , AC110V±10% 30A 60HZ

Machine Details



12 inch capacitance touch screen



Metal holder



Handpiece Protect Design



Pure ABS material with metallic spray painting

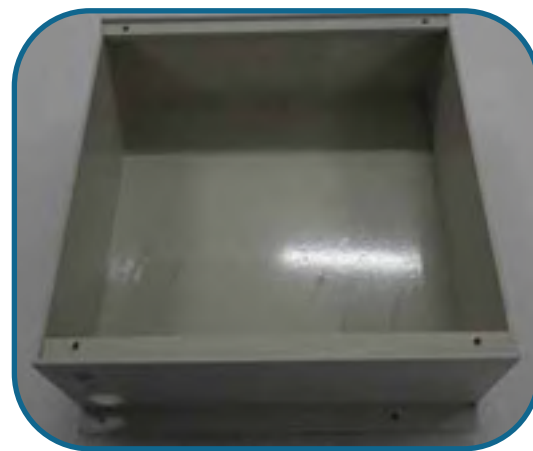
Machine Details



Self-developed power supply, more professional & stable



Sealed 4* 12000uf professional capacitance to ensure safety and high energy output



High pressure booster pump with 10L stainless steel water tank, fast water velocity

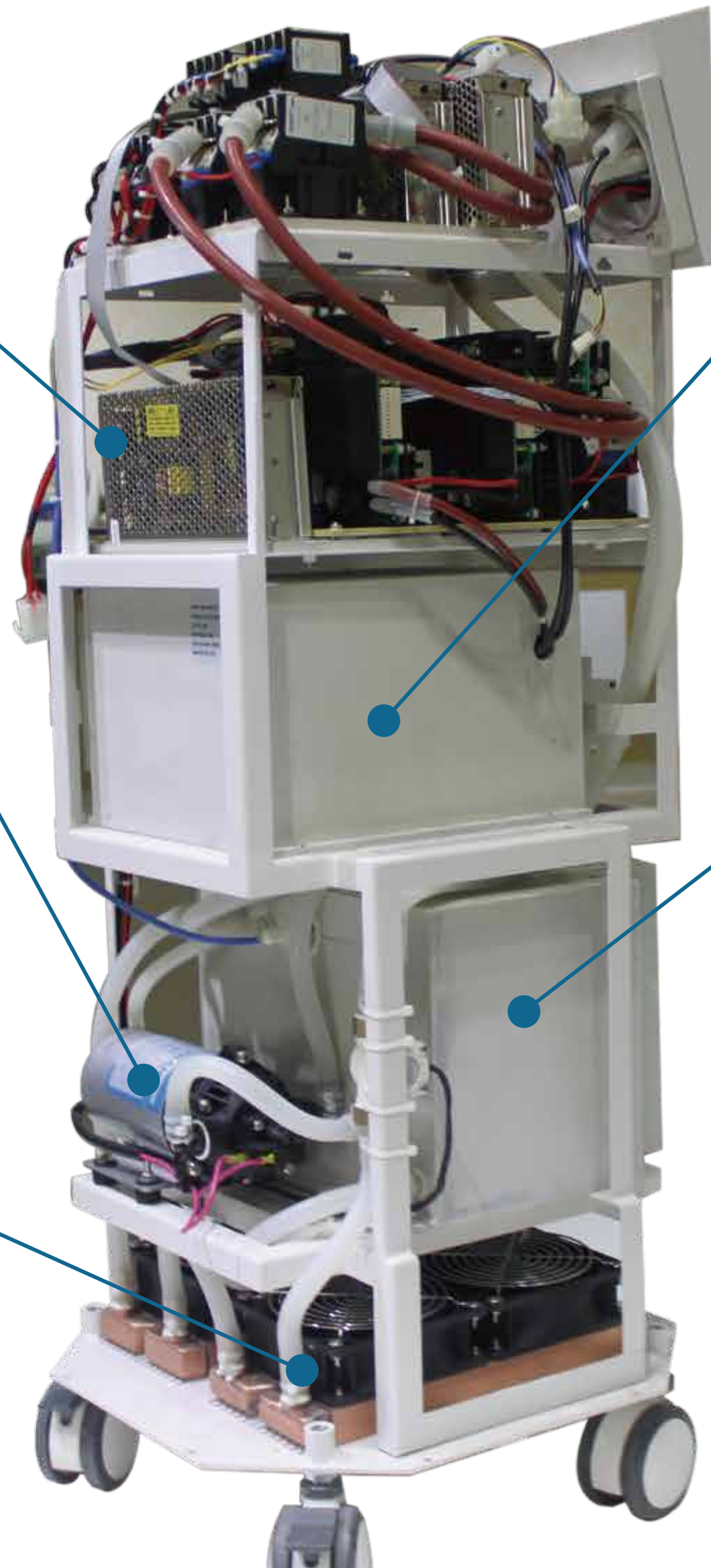


Inner water tank, ion filter combined with impurity filter to clear the water, ensure a good water circulation



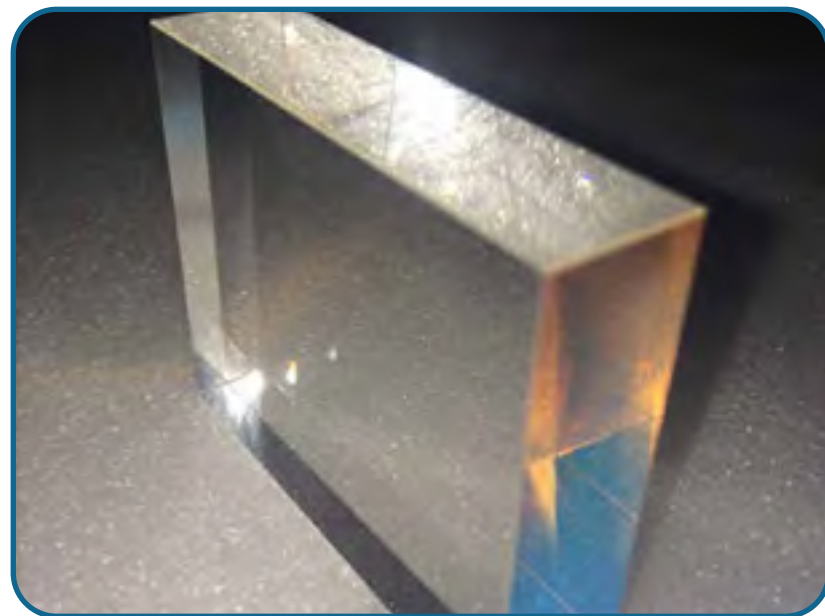
4 pure copper radiators with 4 big power DC fans, excellent heat exchange

The main body is fixed on the metal frame, shock-resistant during shipping; module designed inner structure to reduce the interference and easy for maintenance



Handle Details

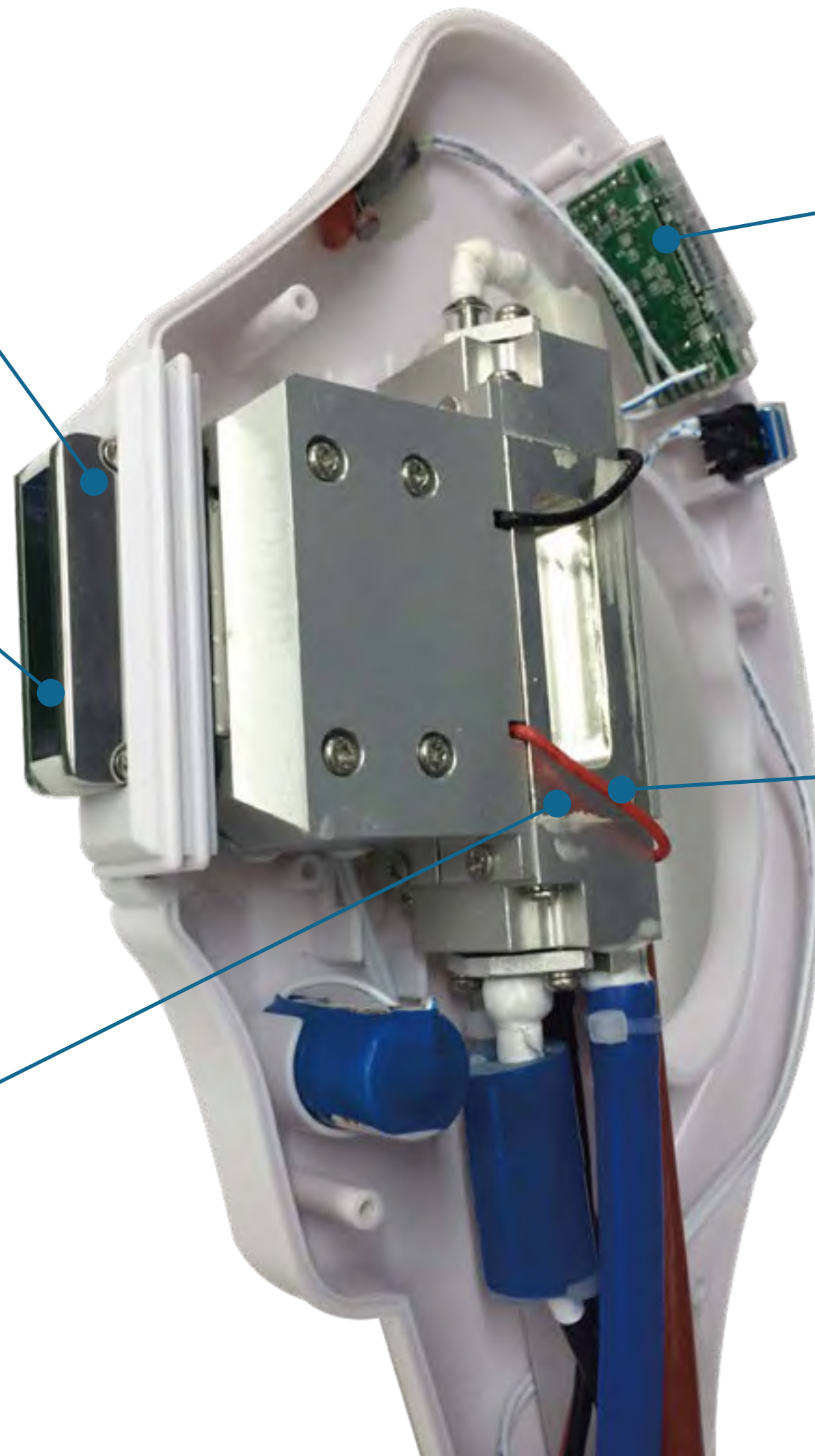
Bipolar RF board built-in to enhance the skin rejuvenation results



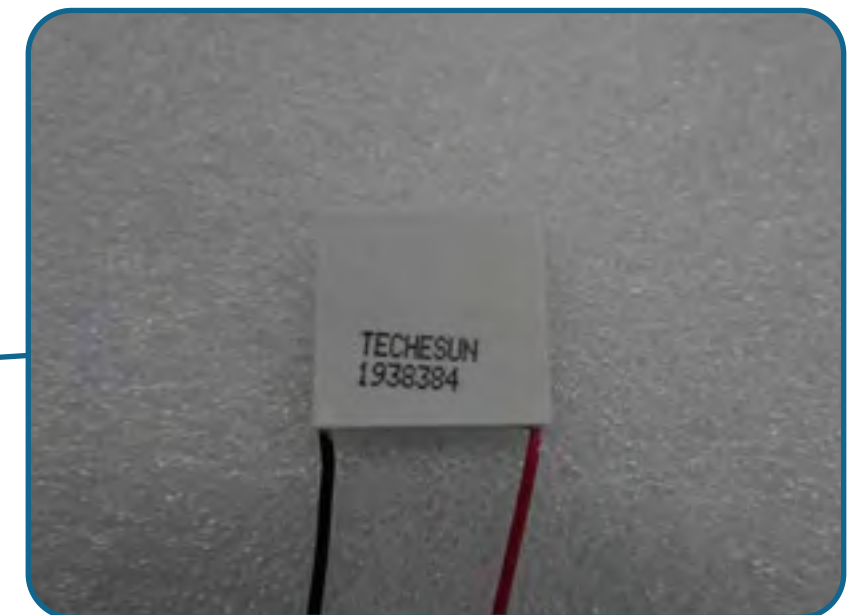
Big spot size Sapphire crystal, 16*50mm for hair removal and 8*34mm for skin rejuvenation



Original USA imported Xenon lamp, longer lifetime



Auto counter design



Semiconductor cooling pad, keep the treatment temperature 0-3°C, comfortable treatment



SR handle cooling



HR handle cooling

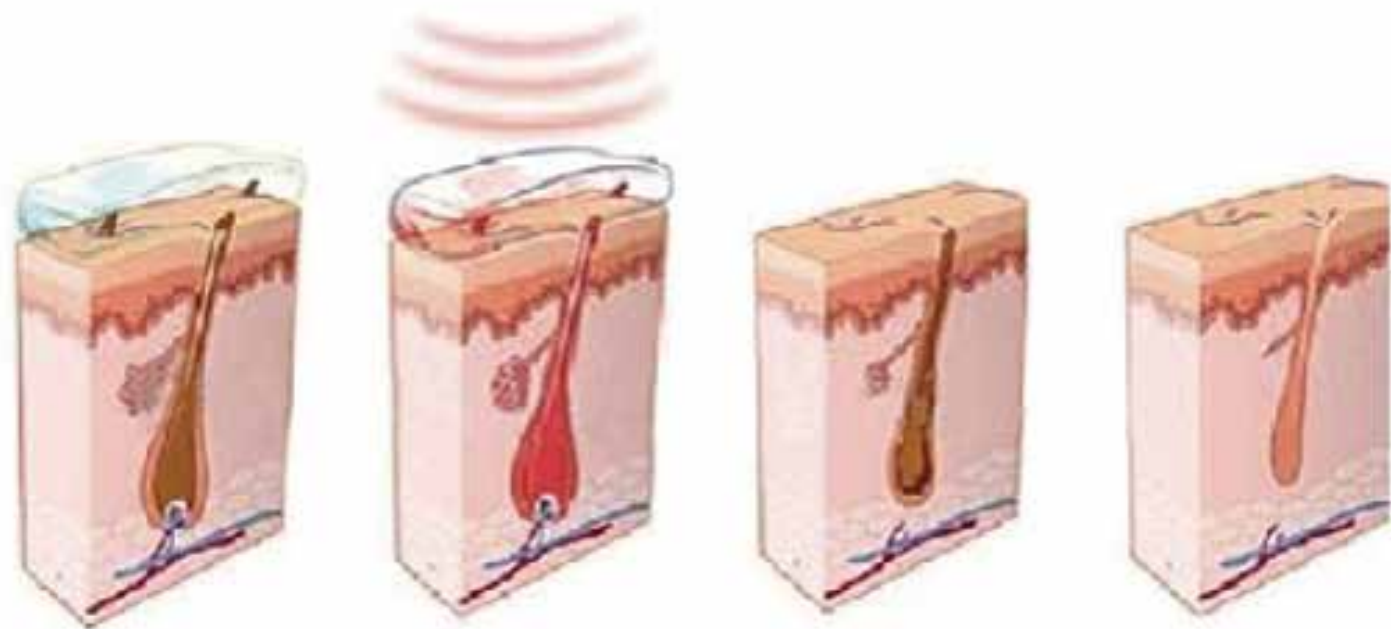
Operation system

1. Turn on the machine waiting loading. Logo design and different language available
2. Choose function, HR (Hair Removal), SR (Skin Rejuvenation)
3. Choose working mode, SHR or Elight or IPL
4. Set parameters and start working

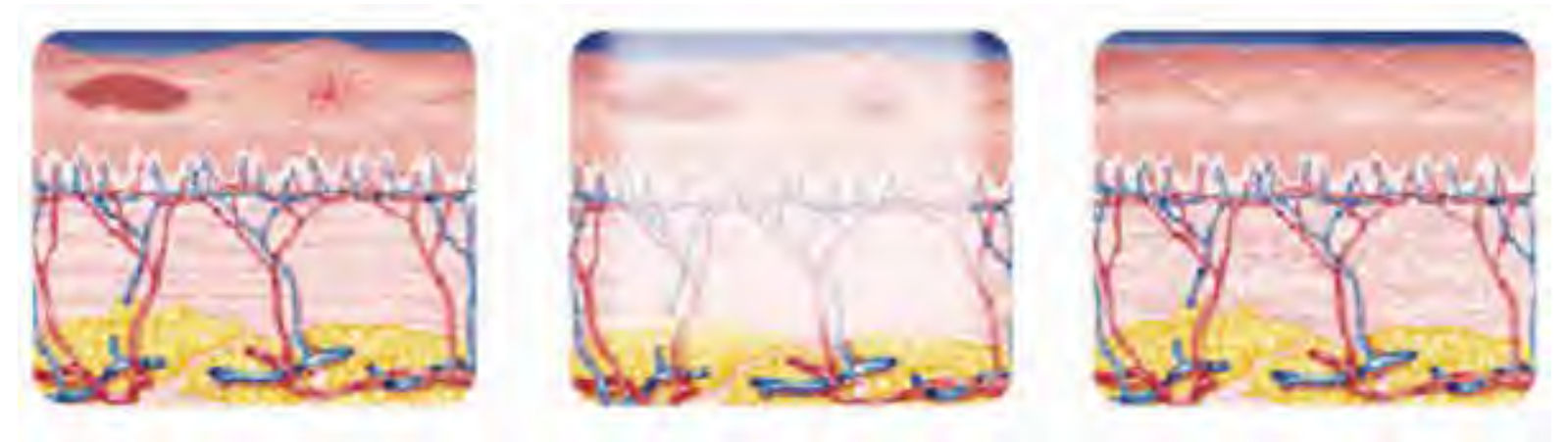


Treatment Principle

SHR Utilizes the melanin path only partially (50%).and combining In-Motion technology, gently warms the skin helping penetrate light energy down to the follicles . Slower, but longer heating process more effective for permanent hair removal than traditional ipl.



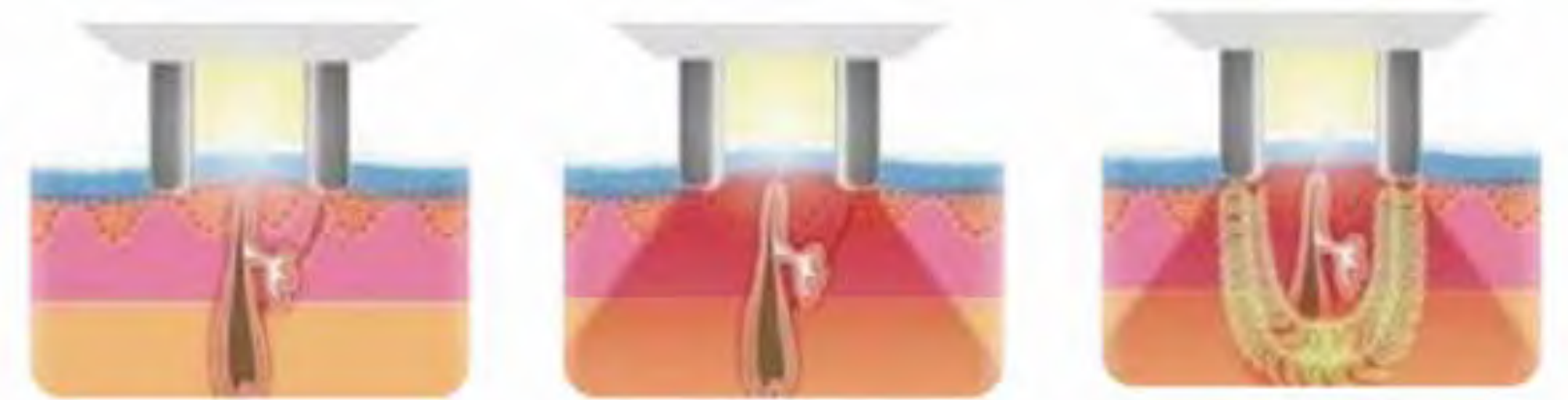
Hair removal Principle



Skin rejuvenation Principle

With the selective absorption for the skin to light energy, various pathological tissues of corium and epidermis creates Photo thermolysis effect .The pigment tissue and vascular pathological tissue would absorb more energy without injuring the epidermis, and then remove these pathological tissues better and get the effect. The light acts on the entire skin corium and connective tissue, stimulates the collagens of different depth to realign and grow,then gets treatment effect.

E-light, combines IPL and Radio Frequency to reach deeper down and does not affect IPL treatment . By using this latest technology together, it has the bonus of rejuvenating the skin at the same time leaving it softer than normal.



Elight principle

Treatment Step



Step 1. Patch Test

Our laser technicians begin with the procedure by doing a patch test 48 hours before your treatment. This test is to determine if your skin exhibits an allergic reaction. 95% of our patients do not get any sort of reaction.



Step 2. Shaving the Area

Make sure you shave the area the night before for your skin to be less sensitive to the laser.



Step 3. Applying Gel

The therapist will apply cooling gel on the area being treated to help cool and glide the laser.



Step 4. Safety Goggles

In order to carry the procedure safely, both clients and operators will be given a protective eye wear similar to the ones in the picture.



Step 5. Duration of the Process

The average time taken is 20 minutes for the face and 5 minutes for the underarms. For bikini it takes on average 15 minutes whereas for legs and back (where there's significantly more area) it takes 45 minutes to an hour. On average, you'll probably need 4 to 6 treatments, every 4 weeks a treatment. However the number of treatment may vary with your skin type, skin colour and hair growth.



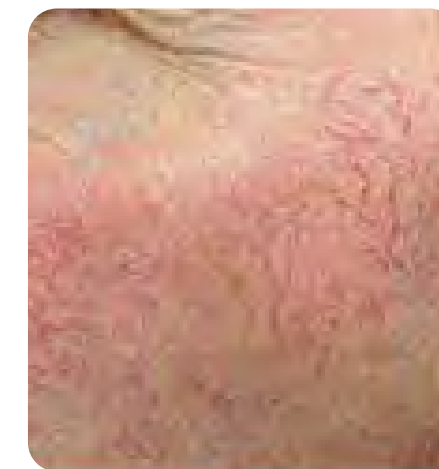
Step 6. Post Treatment Care

Apply aloe Vera or hydrocortisone cream to treatment areas to ease temporary discomfort. Ice packs may also be used if swelling occurs. Strictly avoid any sun exposure for at least 2 weeks after the laser hair removal treatment, as the treated area will be more prone to sun-burn and pigmentation change. Keep the area covered and use a sunscreen with a 30+ protection whilst outdoors.

Treatment scope and results



Before & After



5~8 session with 1 month interval permanent Removal

Company Profile



ABOUT US

Over 17 years producing experience, Beijing Leadbeauty S&T Co.,Ltd is a manufacturer for laser and light based medical aesthetic equipment. Two factories covers 2200 m² with professional R&D, production line, designers, programmers and English after sale service team. The quality of our machines are under the strict standard of ISO9001 and ISO13485. We aim to give high quality products with most advanced tech, unique design, powerful function and timely services.



Exhibition Show



2016 Dubai

2015 Sydney

Site training